

## RIBMH1SM

### 4.00" Track Mount Relay 15 Amp SPST + Override + Monitor with 10-30 Vac/dc/208-277 Vac Coil



Functional Devices, Inc. A600C 2005



#### Contact Ratings:

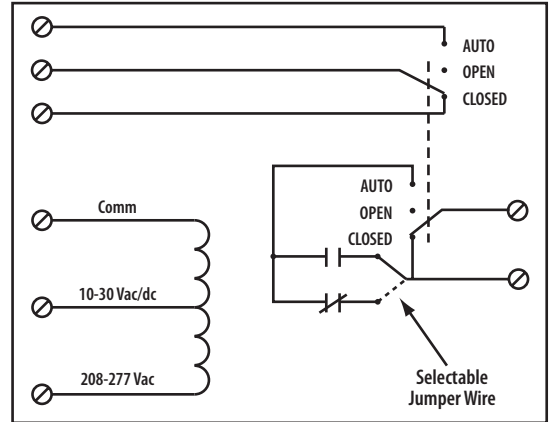
15 Amp Resistive @ 150 Vac  
10 Amp Resistive @ 277 Vac  
480 VA Pilot Duty @ 277 Vac  
480 VA Ballast @ 277 Vac  
600 Watt Tungsten @ 120 Vac N/O  
240 Watt Tungsten @ 120 Vac N/C  
1/3 HP for N/O @ 120-240 Vac  
1/6 HP for N/C @ 120-240 Vac  
1/4 HP for N/O @ 277 Vac  
1/8 HP for N/C @ 277 Vac

#### Coil Current:

30 mA @ 10 Vac    12 mA @ 10 Vdc  
32 mA @ 12 Vac    14 mA @ 12 Vdc  
42 mA @ 24 Vac    16 mA @ 24 Vdc  
50 mA @ 30 Vac    18 mA @ 30 Vdc  
35 mA @ 208-277 Vac

#### Coil Voltage Input:

10-30 Vac/dc ; 208-277 Vac ; 50-60 Hz  
Drop Out = 2.1 Vac / 2.8 Vdc  
Pull In = 9 Vac / 10 Vdc



**# Relays & Contact Type:** One (1) SPST Continuous Duty Coil  
**Expected Relay Life:** 10 million cycles minimum mechanical  
**Operating Temperature:** -30 to 140° F  
**Operate Time:** 20mS  
**Relay Status:** LED On = Activated  
**Dimensions:** 2.000" x 4.000" x 1.750"  
**Track Mount:** 4.000", See MT4 Series on page 128  
MT4 Mounting Track Sold Separately  
**Approvals:** UL Listed, UL916, UL864, C-UL Canada  
California State Fire Marshal, CE Approved  
**Gold Flash:** Yes  
**Override Switch:** Yes (with Monitor)

**Notes:** » Normally Open or Normally Closed selected by yellow jumper wire

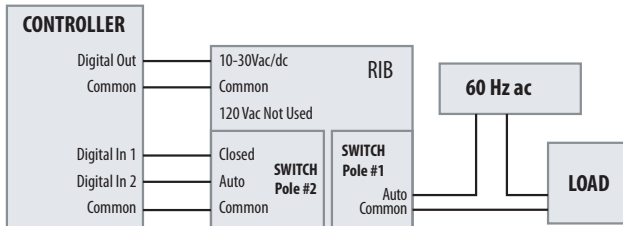
» Second pole of override switch can be connected to digital-in of controller to report position of override switch

» Rating of second pole is 50 Vac/dc, 0.25 Amp max

## Notes:

### MONITORING SWITCH POSITION WITH A CONTROLLER

Digital In 1 and 2 of the controller can be used to monitor the position of the HOA switch. The controller can be programmed to log the status of the HOA and provide a warning if the switch is in an override position.



#### ENCLOSED RELAYS

##### 10 AMP

RIBU1SM  
RIBH1SM

#### TRACK RELAYS

##### 15 AMP

RIBMU1SM  
RIBMH1SM  
RIBMNU1SM  
RIBMNH1SM

DI1	DI2	RESULT
Open	Open	Overridden Off
Open	Closed	Auto
Closed	Open	Overridden On
Closed	Closed	Error Condition