

RIBH1SM

Enclosed Relay 10 Amp SPST-N/O + Override + Monitor with 10-30 Vac/dc/208-277 Vac Coil



Functional Devices, Inc. A600C 2005



Contact Ratings:

10 Amp Resistive @ 277 Vac
480 VA Pilot Duty @ 240-277 Vac
480 VA Ballast @ 277 Vac
600 Watt Tungsten @ 120 Vac N/O
240 Watt Tungsten @ 120 Vac N/C
1/3 HP for N/O @ 120-240 Vac
1/4 HP for N/C @ 120-240 Vac
1/4 HP for N/O @ 277 Vac
1/8 HP for N/C @ 277 Vac

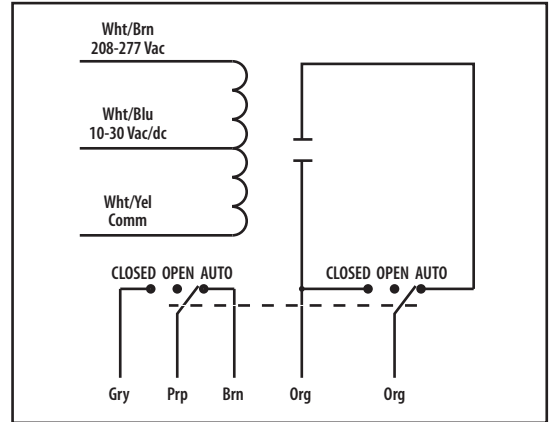
Coil Current:

30 mA @ 10 Vac 12 mA @ 10 Vdc
32 mA @ 12 Vac 14 mA @ 12 Vdc
42 mA @ 24 Vac 16 mA @ 24 Vdc
50 mA @ 30 Vac 18 mA @ 30 Vdc
35 mA @ 208-277 Vac

Coil Voltage Input:

10-30 Vac/dc ; 208-277 Vac ; 50-60 Hz
Drop Out = 2.1 Vac / 2.8 Vdc
Pull In = 9 Vac / 10 Vdc

Notes: » Order Normally Closed by adding
“-NC” to end of model number



» Second pole of override switch can be connected to digital-in of controller to report position of override switch

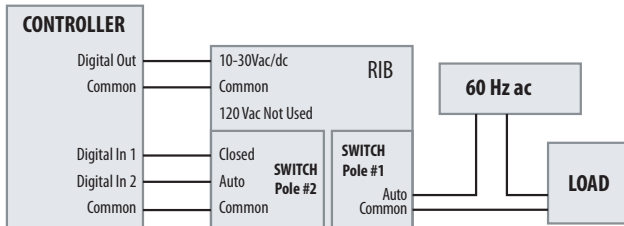
» Rating of second pole is 277 Vac max and 5 Amp max

Relays & Contact Type: One (1) SPST Continuous Duty Coil
Expected Relay Life: 10 million cycles minimum mechanical
Operating Temperature: -30 to 140° F
Operate Time: 20mS
Relay Status: LED On = Activated
Dimensions: 2.30" x 3.20" x 1.80" with .50" NPT nipple
Wires: 16', 600V Rated
Approvals: UL Listed, UL916, UL864, C-UL Canada
California State Fire Marshal, CE Approved
Housing Rating: Plenum, NEMA 1
Gold Flash: Yes
Override Switch: Yes + Monitor

Notes:

MONITORING SWITCH POSITION WITH A CONTROLLER

Digital In 1 and 2 of the controller can be used to monitor the position of the HOA switch. The controller can be programmed to log the status of the HOA and provide a warning if the switch is in an override position.



ENCLOSED RELAYS

10 AMP

RIBU1SM
RIBH1SM

TRACK RELAYS

15 AMP

RIBMU1SM
RIBMH1SM
RIBMNU1SM
RIBMNH1SM

DI1	DI2	RESULT
Open	Open	Overridden Off
Open	Closed	Auto
Closed	Open	Overridden On
Closed	Closed	Error Condition