

## RIB24P-FA

### Enclosed Relay 20 Amp DPDT, Polarized with 24 Vac/dc Coil



Functional Devices, Inc. A600C 2005



#### Contact Ratings:

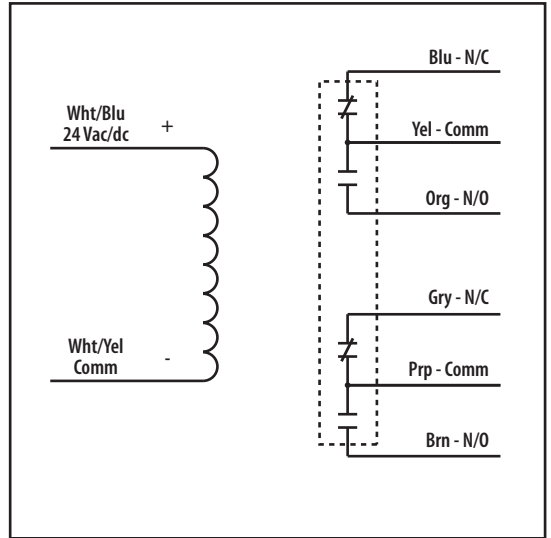
20 Amp Resistive @ 300 Vac  
20 Amp Resistive @ 28 Vdc, 15 Vdc  
15 Amp Resistive @ 600 Vac  
1 HP @ 120 Vac  
2 HP @ 240-277 Vac  
3 HP @ 480 Vac - 600 Vac  
20 Amp Ballast @ 277-480 Vac  
770 VA Pilot Duty @ 120 Vac  
1,158 VA Pilot Duty @ 240 Vac  
1,110 VA Pilot Duty @ 277 Vac  
1,640 VA Pilot Duty @ 480 Vac

#### Coil Current:

100 mA @ 20 Vac  
125 mA @ 24 Vac  
50 mA @ 20 Vdc  
50 mA @ 24 Vdc  
70 mA @ 30 Vdc

#### Coil Voltage Input:

24 Vac/dc ; 50-60 Hz  
Drop Out = 3 Vac / 3.8 Vdc  
Pull In = 20 Vac / 20 Vdc

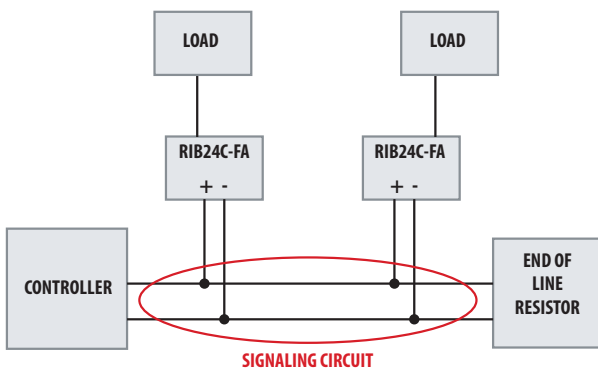


**# Relays & Contact Type:** One (1) DPDT Continuous Duty Coil  
**Expected Relay Life:** 10 million cycles minimum mechanical  
**Operating Temperature:** -30 to 140° F  
**Operate Time:** 18mS  
**Relay Status:** LED On = Activated  
**Dimensions:** 2.30" x 3.20" x 1.80" with .50" NPT nipple  
**Wires:** 16', 600V Rated  
**Approvals:** UL Listed, UL916, UL864, C-UL Canada  
California State Fire Marshal, CE Approved  
**Housing Rating:** Plenum, NEMA 1  
**Gold Flash:** Yes  
**Override Switch:** No

## Notes:

### POLARIZED RELAYS

For fire alarm systems, smoke control systems, etc. Relays are polarized to work in a supervised system and may be turned on and off by reversing polarity.



#### ENCLOSED RELAYS

RIB12C-FA  
RIB24C-FA  
RIB24S-FA  
RIBT24B-FA  
RIB24P-FA

#### TRACK RELAYS

RIBMN12C-FA  
RIBMN24C-FA  
RIBMN12S-FA  
RIBMN24S-FA