

RIB2402D

Enclosed Relay 10 Amp DPDT with 24 Vac/dc/208-277 Vac



Functional Devices, Inc. A600C 2005



Contact Ratings:

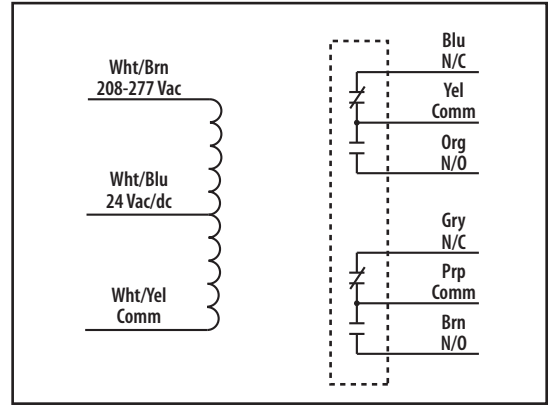
10 Amp Resistive @ 30 Vdc
10 Amp Resistive @ 277 Vac General Use
1/2 HP for N/O @ 120/240 Vac
1/3 HP for N/C @ 120/240 Vac
B300 Pilot Duty
120 Vac 30A Make 3A Break (360 VA)
240 Vac 15 A Make 1.5A Break (360 VA)
208 Vac 17.3A Make 1.73A Break (360 VA)
277 Vac 13A Make 1.3A Break (360 VA)
24 Vac 30A Make 5A Break (120VA) 5A Max

Coil Current:

22 mA @ 18 Vac
29 mA @ 24 Vac
36 mA @ 30 Vac
32 mA @ 208-277 Vac
18 mA @ 20 Vdc
22 mA @ 24 Vdc
32 mA @ 30 Vdc

Coil Voltage Input:

24 Vac/dc ; 208-277 Vac ; 50-60 Hz
Drop Out = 3 Vac / 3.8 Vdc
Pull In = 18 Vac / 20 Vdc



Relays & Contact Type: One (1) DPDT Continuous Duty Coil
Expected Relay Life: 10 million cycles minimum mechanical
Operating Temperature: -30 to 140° F
Operate Time: 8mS
Relay Status: LED On = Activated
Dimensions: 1.70" x 2.80" x 1.50" with .50" NPT nipple
Wires: 16', 600V Rated
Approvals: UL Listed, UL916, UL864, C-UL Canada
California State Fire Marshal, CE Approved
Housing Rating: Plenum, NEMA 1
Gold Flash: No
Override Switch: No



RIB2402D-RD
» Red housing



RIB2402D-N4
» NEMA 4X housing

Notes: