

## RIB2401D

### Enclosed Relay 10 Amp DPDT with 24 Vac/dc/120 Vac



Functional Devices, Inc. A600C 2005



#### Contact Ratings:

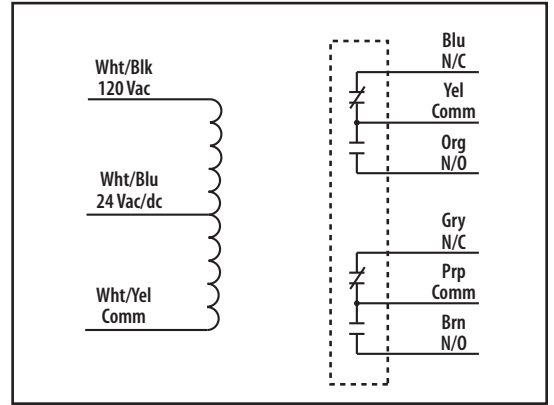
10 Amp Resistive @ 30 Vdc  
10 Amp Resistive @ 277 Vac General Use  
1/2 HP for N/O @ 120/240 Vac  
1/3 HP for N/C @ 120/240 Vac  
**B300 Pilot Duty**  
120 Vac 30A Make 3A Break (360 VA)  
240 Vac 15 A Make 1.5A Break (360 VA)  
208 Vac 17.3A Make 1.73A Break (360 VA)  
277 Vac 13A Make 1.3A Break (360 VA)  
24 Vac 30A Make 5A Break (120VA) 5A Max

#### Coil Current:

22 mA @ 18 Vac  
29 mA @ 24 Vac  
36 mA @ 30 Vac  
28 mA @ 120 Vac  
18 mA @ 20 Vdc  
22 mA @ 24 Vdc  
32 mA @ 30 Vdc

#### Coil Voltage Input:

24 Vac/dc ; 120 Vac ; 50-60 Hz  
Drop Out = 3 Vac / 3.8 Vdc  
Pull In = 18 Vac / 20 Vdc



**# Relays & Contact Type:** One (1) DPDT Continuous Duty Coil  
**Expected Relay Life:** 10 million cycles minimum mechanical  
**Operating Temperature:** -30 to 140° F  
**Operate Time:** 8mS  
**Relay Status:** LED On = Activated  
**Dimensions:** 1.70" x 2.80" x 1.50" with .50" NPT nipple  
**Wires:** 16', 600V Rated  
**Approvals:** UL Listed, UL916, UL864, C-UL Canada  
California State Fire Marshal, CE Approved  
**Housing Rating:** Plenum, NEMA 1  
**Gold Flash:** No  
**Override Switch:** No



RIB2401D-RD  
» Red housing



RIB2401D-N4  
» NEMA 4X housing

## Notes: